

MECAL-JET DUST CONTROL SYSTEM

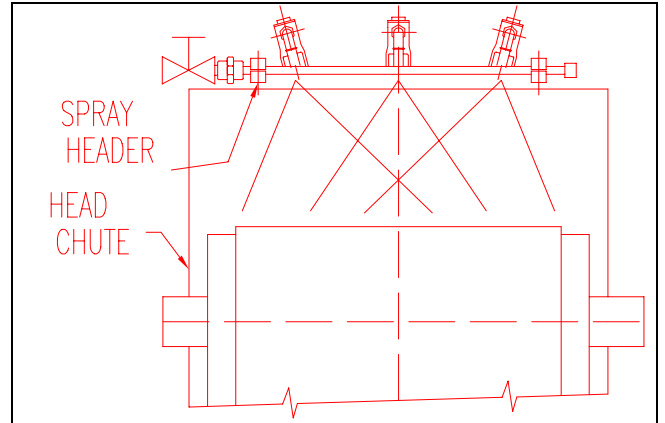
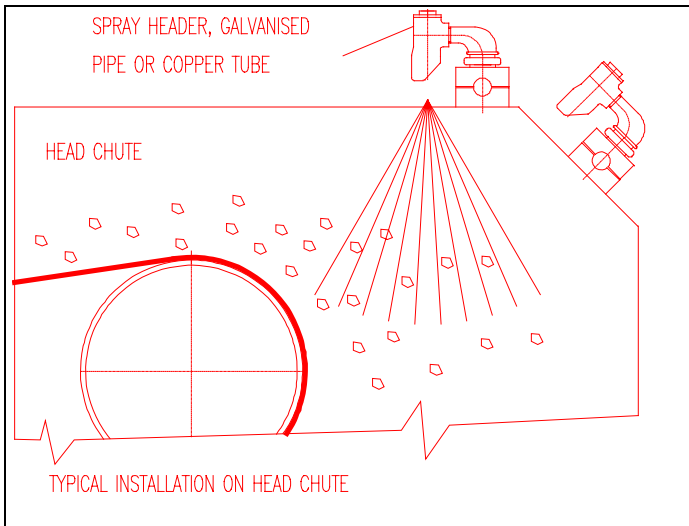
THE ONLY SYSTEM ENGINEERED FOR EFFECTIVE, LOW COST CONTROL OF DUST AT ITS SOURCE.

1. MECAL-JET SUPPRESSES DUST BEFORE IT BECOMES AIRBORNE

Mecal-Jet systems control dust instead of collecting it. With Mecal-Jet, dust never becomes a problem because it is stopped at the source.

2. MECAL-JET ELIMINATES NEED FOR EXTENSIVE COLLECTION EQUIPMENT

Any "dry" or mechanical system involves the use of dust bins, bags, ducts, hoods and large motors not required by Mecal-Jet.



3. MECAL-JET ELIMINATES TIME & COSTS OF EXTENSIVE SERVICING

All equipment used in dry collecting systems must be regularly and periodically cleaned, and the dust disposed of. By doing away with collection, Mecal-Jet reduces maintenance time and costs involved - pays off in low operating costs.

4. MECAL-JET SOLVES "IMPOSSIBLE" DUST PROBLEMS

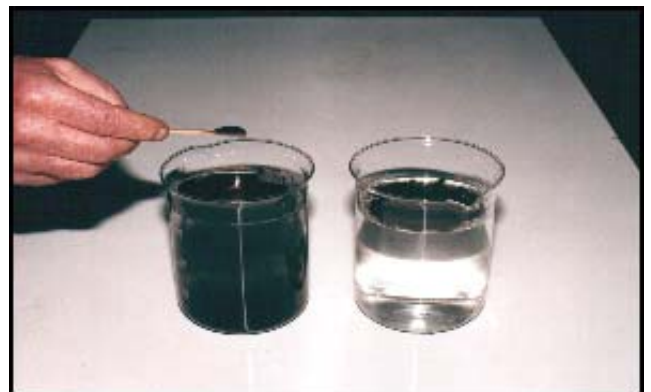
Where dust-producing areas are large and unconfined, Mecal-Jet is the only practical and economical means of controlling dust . . . does not require the use of elaborate enclosures or duct work.

5. MECAL-JET ADDS LESS THAN 1% MOISTURE

Using Compound MDS (one part MDS to 4,000 parts water or more), which is one of the most powerful surface active compounds known, Mecal-Jet adds as little as ½ of 1% total moisture for effective dust suppression.

6. MECAL-JET TREATED MATERIALS HAVE CARRY-OVER ADVANTAGES

Properly applied, Compound MDS provides carry-over dust control through handling, storage and reclaim.



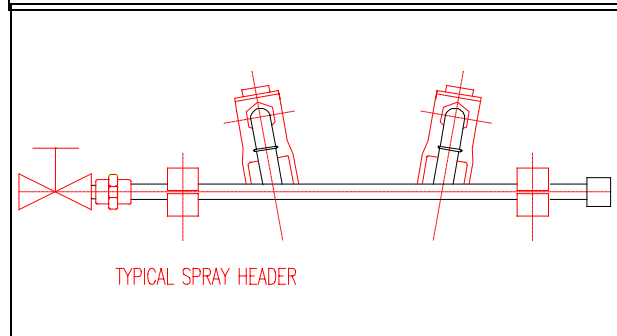
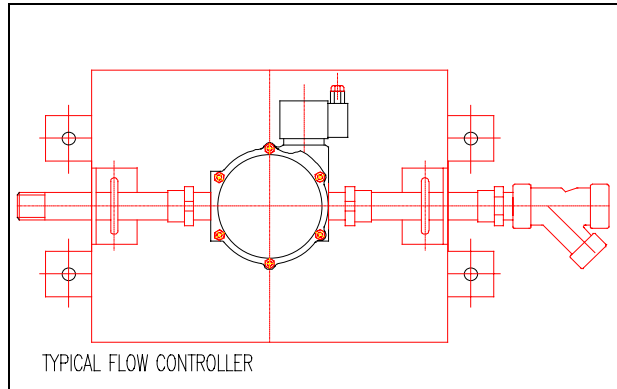
Mecal-Jet has proven it is the only practical method to control dust with an efficiency of 90% plus, from truck dumper area to primary crusher to stockpile and reclaim. Mecal-Jet systems also meet all state and local air pollution control codes.

(DOO-01-001/0505)

MECAL-JET PROPORTIONERS

Automatically proportions Compound MDS and water are available in several standard types and capacities or specific designs for specific requirements.

| MODEL | PROPORTIONERS |
|-------|---------------------------|
| D | Small capacity - 50L/M |
| T | Medium capacity - 500L/M |
| S | Large capacity - 3000 TPH |



SPRAY JET CONTROLLER

Each spray jet header in the system has a controller which governs the flow of solution supplied by the proportioner. Valve action is positive, either fully on or fully off. Prevents waste of solution; the spray jets are operative only when material is actually flowing.

SPRAY JET HEADER

The spray jet header carries the spray jets which apply the mixed solution to the material. One or more headers are placed at each treatment point, the exact arrangement being determined by the type of spray pattern selected and the dust control effect required.



CONTROL ACTUATORS

Automatically detect presence of material to be sprayed and transmit signal to spray jet controller. Standard models are available that operate on mechanical displacement, weight, mass proximity or electrical interlock.

CONTROL PANEL

The Control Panel gives maximum flexibility of the system allowing individual treatment points to be controlled depending on climatic or material condition.



A.B.N. 63 103 035 687

MECAL PTY. LTD.

9 Paramount Road (P.O. Box 4140)
West Footscray 3012
Melbourne, AUSTRALIA

Website: www.mecal.com.au

Phone: 03-9314-0144

Fax: 03-9314-2576

Int'l Phone: +61-3-9314-0144

Fax: +61-3-9314-2576

Email: mecal@mecal.com.au

(DOO-01-001/0505)