



WWW.MECAL.COM.AU

BELT CLEANERS

(AGG-13-006)

MECAL CONVEYOR BELT CLEANERS

SIMPLE INSTALLATION & MAINTENANCE



MODEL - MH

This primary belt cleaner has several tungsten carbide tips, that clean the belt at the conveyors head pulley. Dislodged products join the main material flow. Suitable for reversing conveyors. Poly Tips available.

NO PRODUCT SPILLAGE

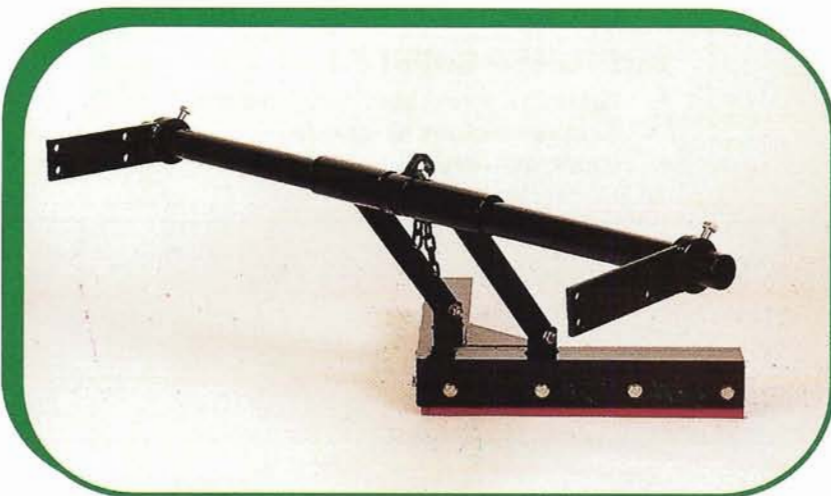
MODEL - MP & MR

These secondary belt cleaners have several tungsten carbide tips that clean the return belt just behind the head pulley. Dislodged products join the main material flow. MP type, is for non-reversing belt. MR type is for reversing belt. Poly Tips available.



REDUCE BELT / IDLER WEAR

PLOUGH

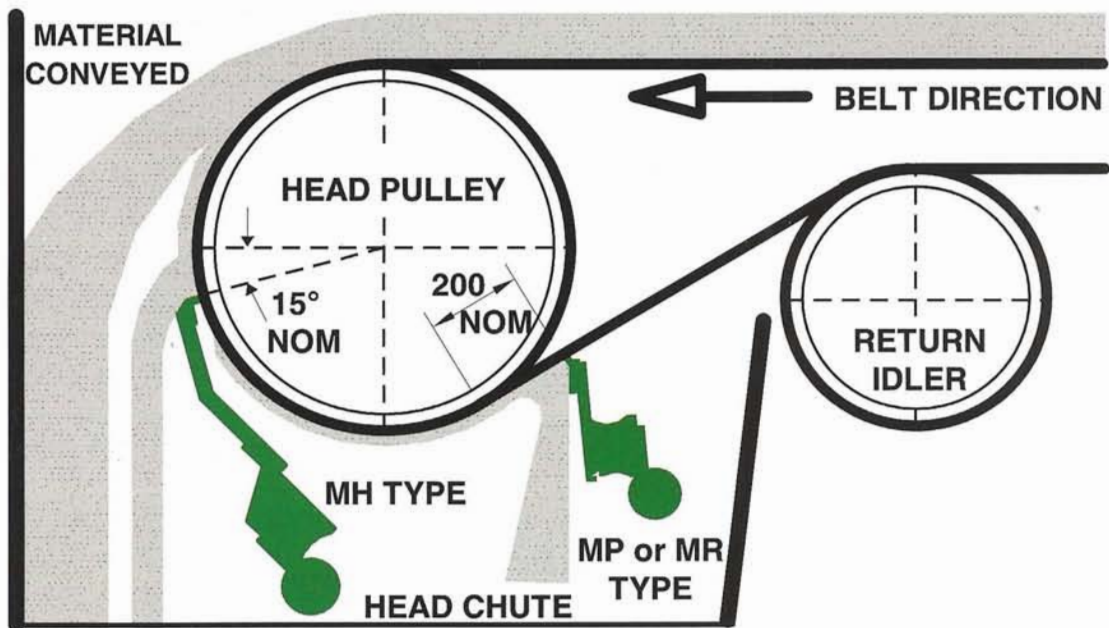


A "Polytuff" blade, cleans the upper side of the return belt before material reaches the tail pulley. Eliminating premature damage or wear of belt, pulley or lagging.

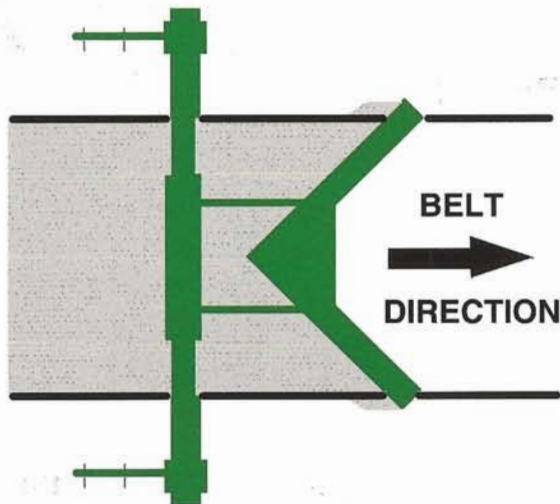
SAVE MONEY

BELT CLEANER INSTALLATION

MH , MP & MR TYPES



PLOUGH



STANDARD FEATURES

- Mild steel frames
- Rubber cushions
- Tungsten carbide tips
- Stainless steel fasteners
- Powder coated finish

OPTIONS

- Sizes for belts 400mm - 2400mm
- Stainless steel construction
- Galvanized finish
- Polytips (Mines Department Approved)
- High duro cushions
- One side adjustment
- Heavy duty design available
- Special features to client request

CUSTOMER SUPPORT

- Technical know how & experience
- Extensive stock of spares
- Quick delivery

LOCAL REPRESENTATIVE

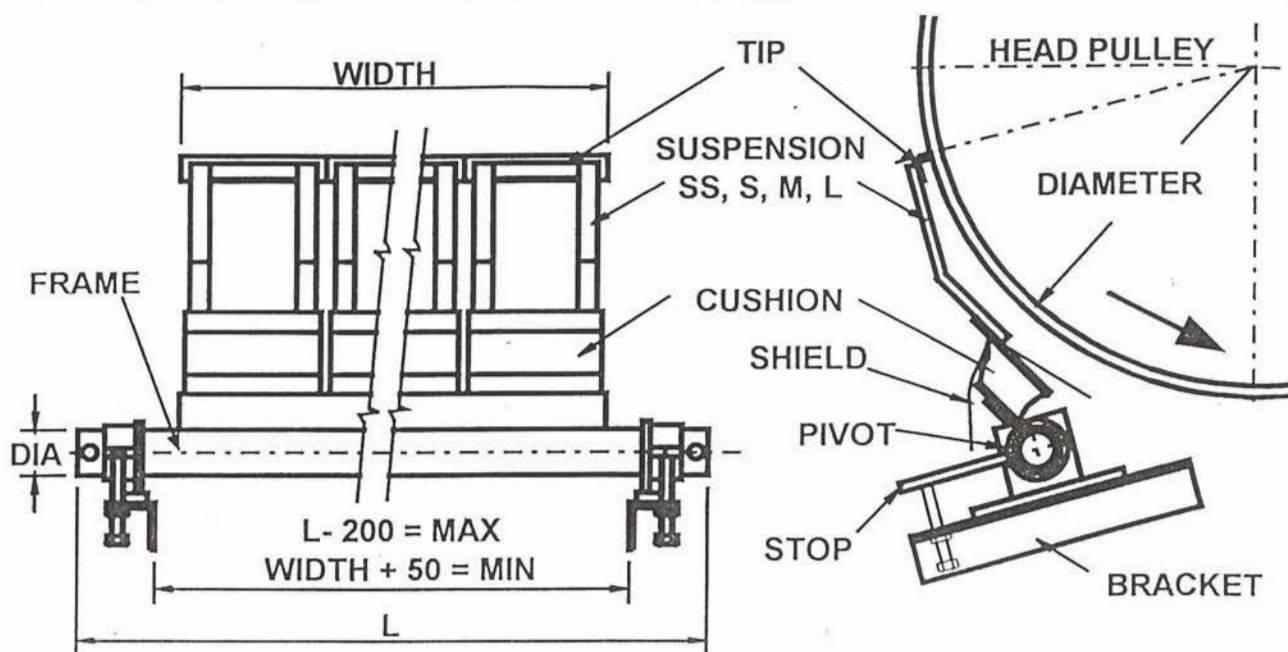


MECAL PTY. LTD.
9 Paramount Road (P.O. Box 4140)
West Footscray 3012
Melbourne, AUSTRALIA
Website: www.mecal.com.au

Phone: 03-9314-0144
Fax: 03-9314 2576
Int'l Phone: +61-3-9314-0144
Fax: +61-3-9314-2576

MECAL MH CONVEYOR BELT CLEANER

SELECTION & SPARE PARTS



Order Code for Belt Cleaner Assembly

MH-XXXX XX

Belt Cleaner width in steps of 200mm. _____ Suspension to suit pulley diameter.

CLEANING WIDTH	SUSPENSION TO SUIT PULLEY DIAMETER	FRAME		PIVOT DIA	STOP	BRACKET	SHIELD
		NO.	L				TEH50065
0400	< 550 USE	TEH50040	950	TEH50110			TEH50080
0600	SS = TEH50070	TEH50041	1250	42mm	TEH50120		ST.STEEL
0800		TEH50042	1400				TEH50280
1000	550 - 700 USE	TEH50043	1600	TEH50111	TEH50121	TEH50130	POLYTIP
1200	S = TEH50071	TEH50044	1800	48mm			TEH50090
1400	700 - 1100 USE	TEH50045	2100	TEH50112	TEH50122		CUSHION
1600		TEH50046	2300	60mm			TEH50060
1800		M = TEH50072	TEH50047	2500			HI-DURO
2000	> 1100 USE	TEH50048	2700	TEH50113	TEH50123	TEH50133	TEH50061
2200		TEH50049	2900	76mm			ST.STEEL
2400	L = TEH50073	TEH50050	3100				TEH50260

Standard Tip is Tungsten Carbide. Polytips should be used for 'Clipped' Belts.

LOCAL REPRESENTATIVE:



MECAL PTY. LTD.
 9 Paramount Road (P.O. Box 4140)
 West Footscray 3012
 Melbourne, AUSTRALIA
 Website: www.mecal.com.au

Phone: 03-9314-0144
 Fax: 03-9314-2576
 Int'l Phone: +61-3-9314-0144
 Fax: +61-3-9314-2576
 Email: mecal@mecal.com.au

A.B.N. 63 103 035 687

(TEH-04-001/0104)

MECAL MH CONVEYOR BELT CLEANER.

The Mecal MH-Type Belt Cleaner is a primary belt cleaning device which fits inside the head chute and cleans the belt at a radial point on the head pulley of the conveyor. MH-Type Belt Cleaners are suitable for use with reversible conveyors, one belt cleaner each end. MH-Type Belt Cleaners may be used on flat or crowned pulleys and the cleaning width should be smaller than or equal to the belt width. In arduous applications a secondary MP-Type Belt Cleaner may also be required.

Installation

- Mark the tip contact point, (refer to drawing) on both sides of the head chute, ideally between 15° and 55° below horizontal centreline.
- Position the belt cleaners support brackets and insertion holes from contact point, as shown on drawing or template.
- Note that the brackets and insertion holes may be positioned at any angle to the tangent line as rotated about the pivot position shown.
- Cut holes in the chute, protect the belt and ensure that no inflammable material is present.
- Weld or bolt brackets in position on both sides of chute.
- Place cleaning modules in position so that:
 - The belt cleaner tips are central and within the conveyor belt width.
 - The suspension arm is parallel to the tangent line from the contact point (as shown).
 - The tips and belt in contact, the adjusting lever is parallel to the bracket.
- Preload the belt cleaner via the adjusting screws and stop. As a guide, preload is 7 - 8 Kgs at each tip, use a spring balance to measure. The correct preload will vary to suit application. Adjust preload as required to adequately clean belt, keeping preload as low as possible.

Installation Templates

TEH50304	Super Small Suspensions	-	400	to	1200	wide
TEH50305	Super Small Suspensions	-	1400	to	2400	wide
TEH50300	Small Suspensions	-	400	to	1200	wide
TEH50301	Small Suspensions	-	1400	to	2400	wide
TEH50302	Medium Suspensions	-	400	to	1200	wide
TEH50303	Medium Suspensions	-	1400	to	2400	wide
TEH50306	Large Suspensions	-	400	to	1200	wide
TEH50307	Large Suspensions	-	1400	to	2400	wide.

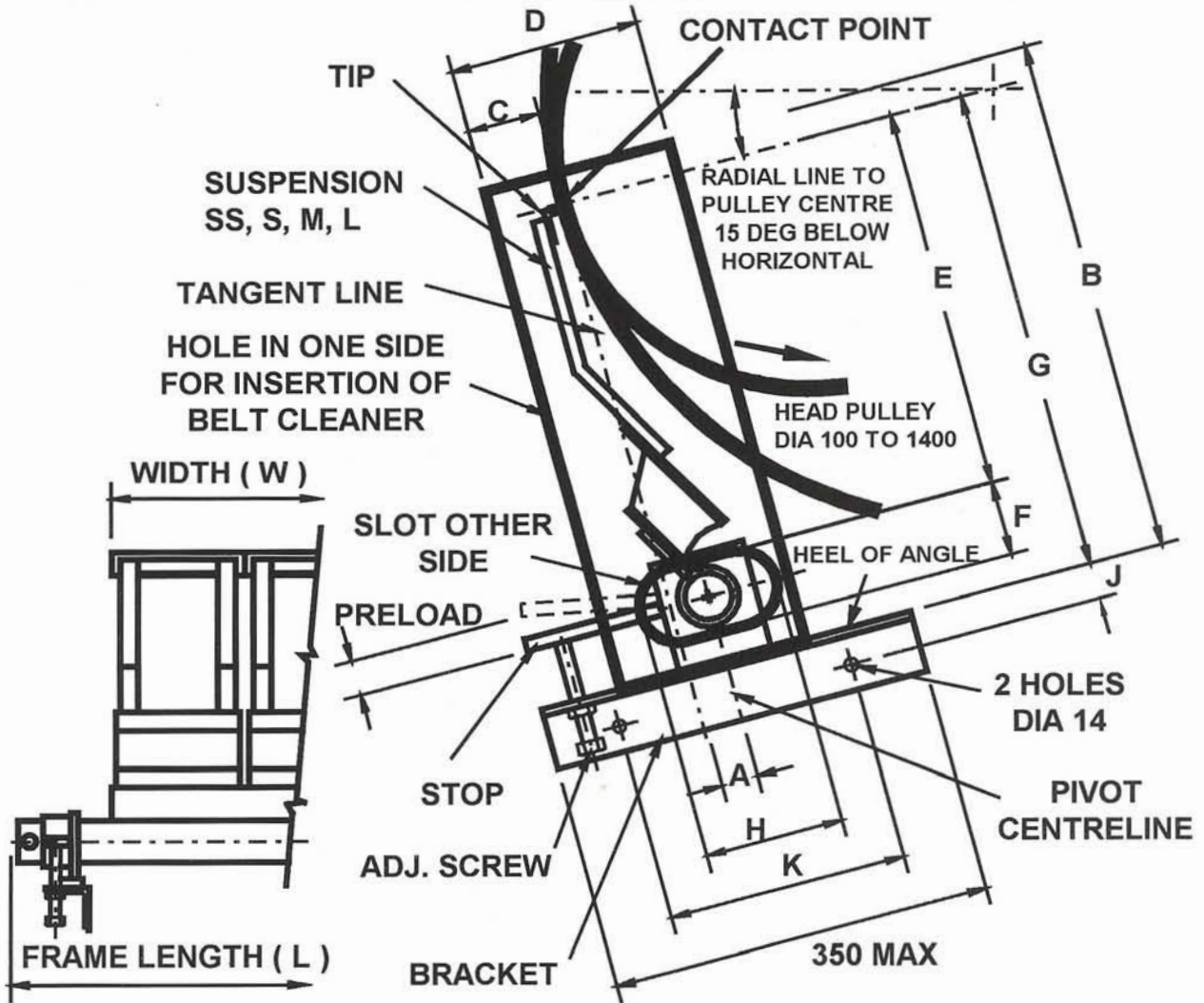
Maintenance

- Inspect belt cleaner at monthly intervals for worn tips, damaged parts, cleaning efficiency and tip preload. Adjustments not normally required.
- Replace tips if worn out or chipped.
- To replace tips, remove cleaning module and retip in workshop. Ensure all tips are in line, across full width.
- Re-install cleaning module and reset preload as specified in installation.

FOR ASSISTANCE CONTACT MECAL'S ENGINEERS

(TEH-04-002/0104)

INSTALLATION DRAWING



PART NO. WIDTH (W)	DIMENSIONS									
	A	B	C	D	E	F	G	H	J	K
MH-0400-1200 SS	13	352		135	244		327			
MH-0400-1200 S	29	412		150	304	60	387	110		
MH-0400-1200 M	30	456		150	348		431			
MH-0400-1200 L	50	491	60	165	384		466			
MH-1400-2400 SS	19	369		150	232		344			
MH-1400-2400 S	33	427		160	290	90	402	130		
MH-1400-2400 M	35	473		160	337		448			
MH-1400-2400 L	55	508		180	372		483			
MH-0400-1600									30	250
MH-1800-2400									40	300

Template supplied with each unit. Widths in 200mm intervals.



MECAL PTY. LTD.
 9 Paramount Road (P.O. Box 4140)
 West Footscray 3012
 Melbourne, AUSTRALIA

Phone: 03-9314-0144
 Fax: 03-9314-2576
 Int'l Phone: +61-3-9314-0144
 Fax: +61-3-9314-2576

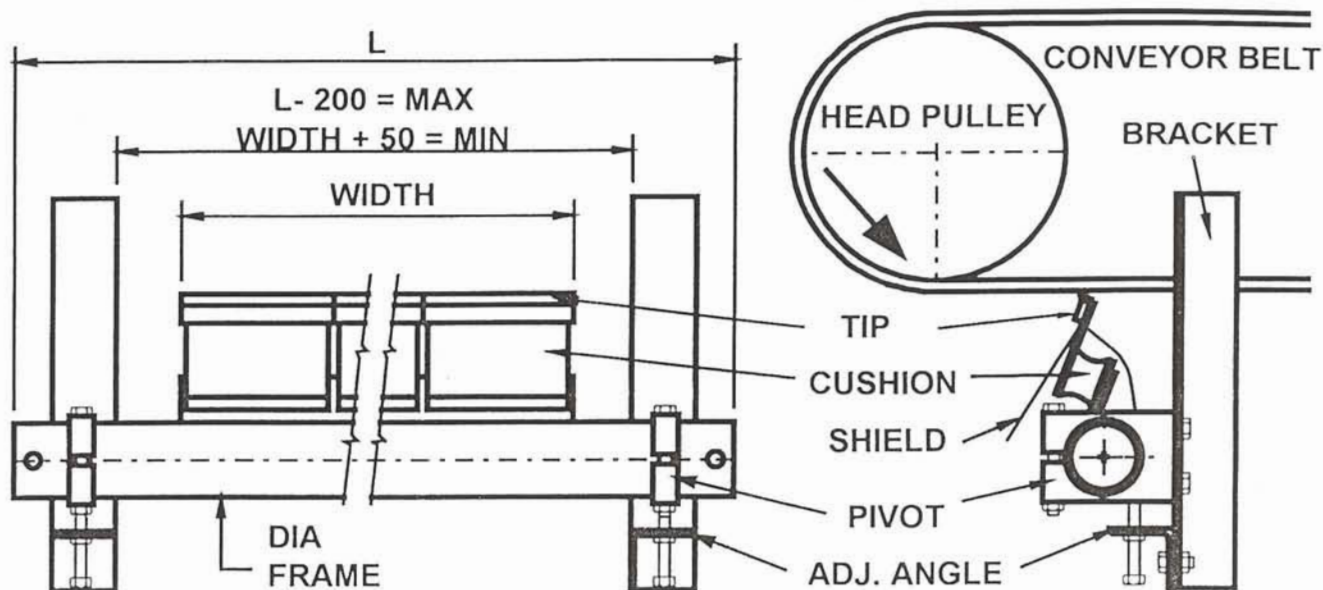
A.B.N. 63 103 035 687

Website: www.mecal.com.au

Email: mecal@mecal.com.au
 (TEH-04-002/0104)

MECAL MP CONVEYOR BELT CLEANER

SELECTION & SPARE PARTS



CLEANING WIDTH	PART NO.	FRAME		PIVOT DIA	BRACKET	ADJUST ANGLE	TIP
		NO.	L				
0450	MP-0450	TEP50041	0950	TEP50136	LEFT HAND TEP50134	TEP50139	TEP50080
0600	MP-0600	TEP50042	1100	48mm			<u>ST. STEEL</u>
0750	MP-0750	TEP50043	1300	TEP50137 60mm			<u>TEP50280</u>
0900	MP-0900	TEP50044	1500				<u>POLYTIP</u>
1050	MP-1050	TEP50045	1600				<u>TEP50090</u>
1200	MP-1200	TEP50046	1800	RIGHT HAND TEP50135	TEP50065	SHIELD	
1350	MP-1350	TEP50047	1950			CUSHION	
1500	MP-1500	TEP50048	2300			TEP50060	
1800	MP-1800	TEP50049	2500			<u>HI-DURO</u>	
1950	MP-1950	TEP50050	2700			TEP50061	
2100	MP-2100	TEP50051	3000			<u>ST. STEEL</u>	
2400	MP-2400	TEP50052	3300			TEP50260	
Standard Tip is Tungsten Carbide						Polytips should be used for 'Clipped' Belts.	

LOCAL REPRESENTATIVE:



MECAL PTY. LTD.
 9 Paramount Road (P.O. Box 4140)
 West Footscray 3012
 Melbourne, AUSTRALIA
 Website: www.mecal.com.au

A.B.N. 63 103 035 687

Phone: 03-9314-0144
 Fax: 03-9314-2576
 Int'l Phone: +61-3-9314-0144
 Fax: +61-3-9314-2576
 Email: mecal@mecal.com.au

(TEP-04-001/0104)

MECAL MP CONVEYOR BELT CLEANER.

Mecal MP-Type Belt Cleaner is a secondary belt cleaning device, which fits inside the head chute and is designed to clean the return belt of non reversing conveyors, at a point of 100mm - 200mm from where the belt leaves the head pulley. The cleaning width should be less than or equal to the belt width. For arduous applications this cleaner may be installed with a primary MH-Type Cleaner or two MP-Type Belt Cleaners in series. An MR-Type Belt Cleaner should be used for reversing conveyors.

Installation

- Select tip contact point, (refer to drawing) so that ideally the cleaner is within the discharge chute and for best results - 100mm - 200mm from where the return belt leaves the head pulley.
- Position the belt cleaners support brackets and insertion holes, from contact point, as shown on drawing or template supplied (No. TEP50300).
- Cut holes in the chute, protect the belt and ensure that no inflammable material is present.
- Weld or bolt brackets in position on both sides of chute.
- Place cleaning module frame in position so that belt cleaner tips are central within the conveyor belt width. Belt cleaner tips touch belt for full width, i.e., frame is parallel to belt. Tips touch belts approx. 20mm in front of contact point and tighten clamp.
- Preload the belt cleaner - with the belt running and use the adjusting screws on each side to evenly raise the cleaner. Adjust the belt cleaner until effective cleaning is achieved, with the tips approximately at the selected contact point and an even pressure in on the belt. Now lock all clamp block bolts tight.

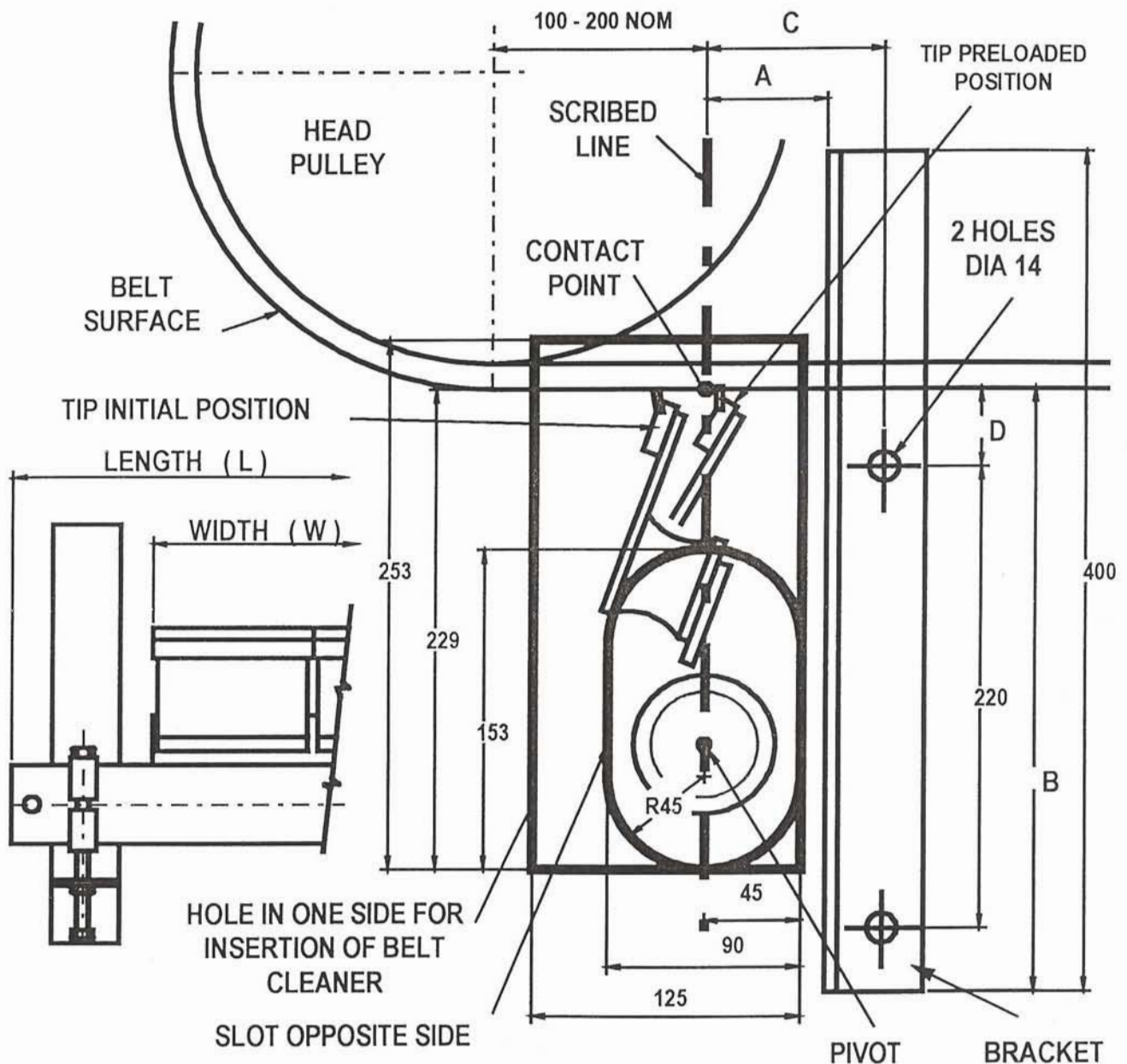
Maintenance

- Inspect belt cleaner at monthly intervals for worn tips, damaged parts, cleaning efficiency and tip preload. Adjustments not normally required.
- Replace tips if worn out or chipped.
- To replace tips, remove cleaning module and retip in workshop. Ensure all tips are in line, across full width.
- Re-install cleaning module and reset preload as specified in installation.

FOR ASSISTANCE CONTACT MECAL'S ENGINEERS

MECAL MP CONVEYOR BELT CLEANER

INSTALLATION DRAWING



PART NO. BELT WIDTH	DIMENSION			
	A	B	C	D
MP- 0450 - 0750	45	270	85	27
MP- 0900 - 1050	50	278	90	35
MP-1200 - 2400	70	287	110	44
Template supplied with each unit.		Widths in 150mm intervals.		



A.B.N. 63 103 035 687

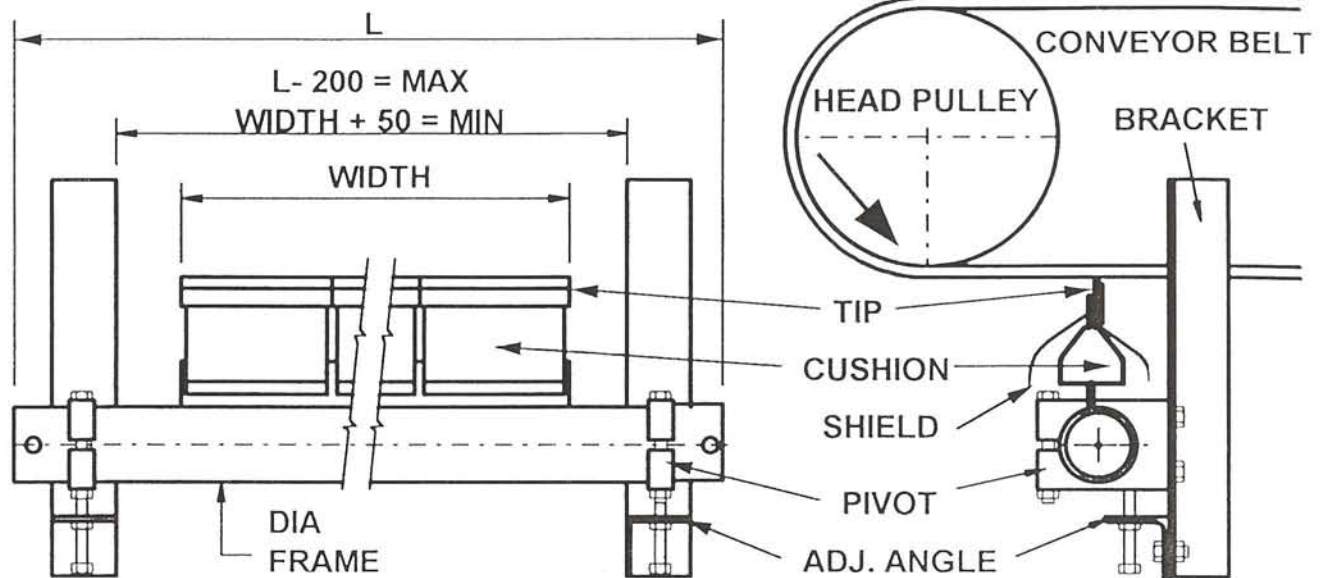
MECAL PTY. LTD.
 9 Paramount Road (P.O. Box 4140)
 West Footscray 3012
 Melbourne, AUSTRALIA
 Website: www.mecal.com.au

Phone: 03-9314-0144
 Fax: 03-9314-2576
 Int'l Phone: +61-3-9314-0144
 Fax: +61-3-9314-2576
 Email: mecal@mecal.com.au

(TEP-04-002/0104)

MECAL MR CONVEYOR BELT CLEANER

SELECTION & SPARE PARTS



CLEANING WIDTH	PART NO.	FRAME		PIVOT DIA	BRACKET	ADJUST ANGLE	TIP
		NO.	L				
0450	MR-0450	TEP50041	0950	TEP50136	LEFT HAND TEP50134	TEP50139	TER50080
0600	MR-0600	TEP50042	1100	48mm			ST. STEEL
0750	MR-0750	TEP50043	1300	TEP50137			POLYTIP
0900	MR-0900	TEP50044	1500				60mm
1050	MR-1050	TEP50045	1600	TEP50138	RIGHT HAND TEP50135	SHIELD	CUSHION
1200	MR-1200	TEP50046	1800				76mm
1350	MR-1350	TEP50047	1950			TEP50065	HI-DURO
1500	MR-1500	TEP50048	2300				TER50061
1800	MR-1800	TEP50049	2500				ST. STEEL
1950	MR-1950	TEP50050	2700				TER50260
2100	MR-2100	TEP50051	3000				
2400	MR-2400	TEP50052	3300				

Standard Tip is Tungsten Carbide Stainless Steel Fasteners Supplied

LOCAL REPRESENTATIVE:



A.B.N. 63 103 035 687

MECAL PTY. LTD.
 9 Paramount Road (P.O. Box 140)
 West Footscray 3012
 Melbourne
 AUSTRALIA

Phone: 03-9314-0144
 Fax: 03-9314 2576
 International
 Phone: +61-3-9314-0144
 Fax: +61-3-9314-2576

(TER-04-001)

MECAL MR CONVEYOR BELT CLEANER.

Mecal MR Belt Cleaner is a secondary belt cleaning device, which fits inside the head chute, and is designed to clean the return belt of reversing conveyors, at a point 100mm - 200mm from where the belt leaves the head pulley. The cleaning width should be less than or equal to the belt width. For arduous applications this cleaner may be installed with a primary MH - type cleaner or two "MR" type belt cleaners in series.

For non-reversing conveyors a Mecal "MP" type belt cleaner should be used.

Installation

- Select tip contact point, Refer to Drawing so that ideally the cleaner is within the discharge chute and for best results between 100mm - 200mm from where the return belt leaves the head pulley.
- Position the Belt Cleaners, support brackets and insertion holes from contact point, as shown on drawing or template supplier.
- Cut holes in the chute, protect the belt and ensure that no inflammable material is present.
- Weld or bolt brackets in position on both sides of chute.
- Place Cleaning Module Frame in position so that :
 - Belt Cleaner tips are central within the conveyer belt width.
 - Belt Cleaner tips touch belt for full width ie frame is parallel to belt.
 - Tighten clamp.
- Preload the Belt Cleaner with the belt running and use the adjusting screws on each side to evenly raise the Cleaner. Adjust the Belt Cleaner until effective cleaning is achieved and an even pressure is on the Belt, the tip will be approximately + 10mm from selected contact point. Now lock all Clamp block bolts tight.

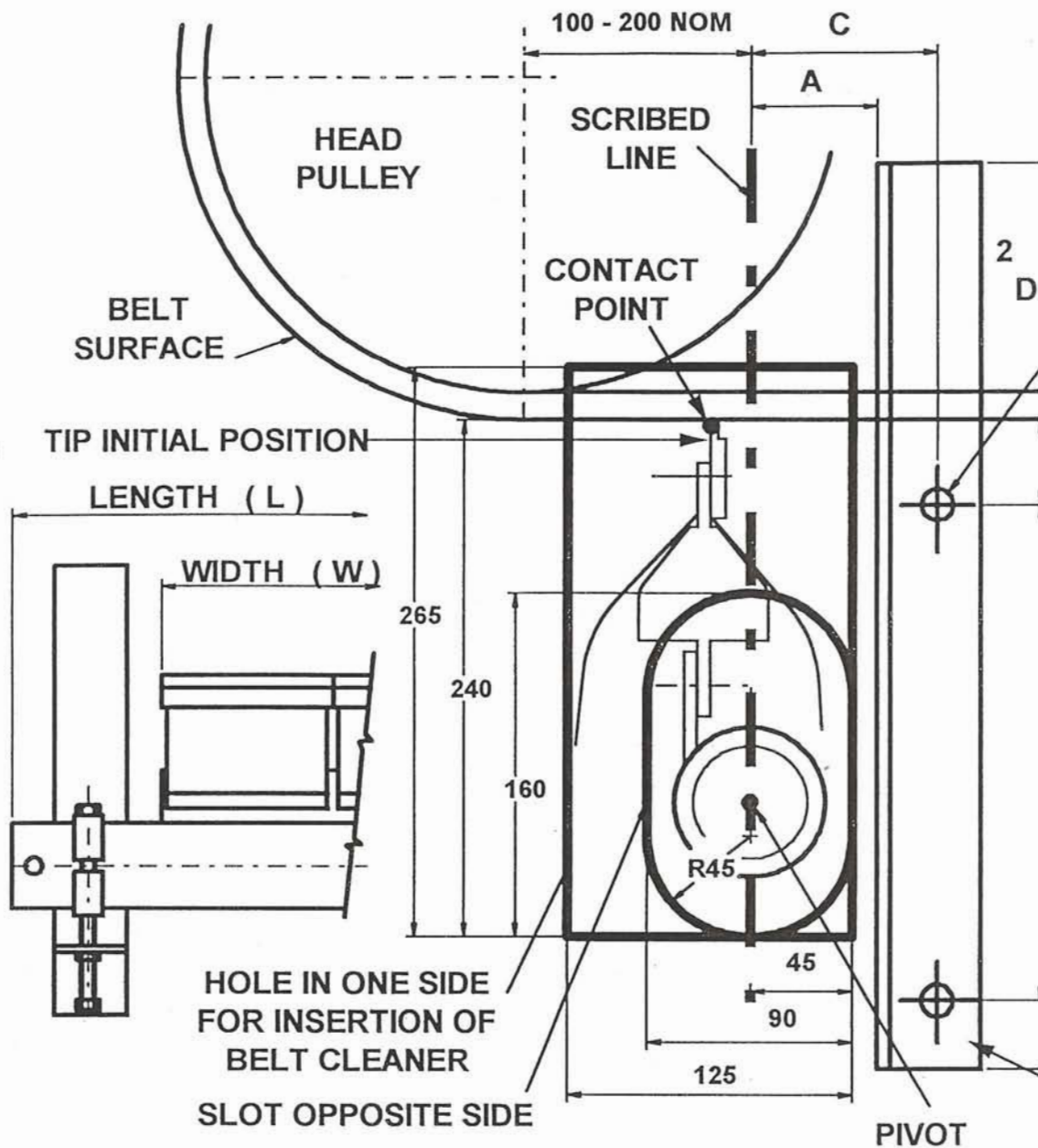
Maintenance

- Inspect belt cleaner at monthly intervals for worn tips, damaged parts, cleaning efficiency and tip preload. Adjustments not normally required.
- Replace tips if worn out or chipped.
- To replace tips, remove cleaning module and retip in workshop.
- Ensure all tips are in line across full width.
- Reinstall cleaning module and reset preload as specified in installation.

FOR ASSISTANCE CONTACT MECAL'S ENGINEERS

(TER-04-002)

MECAL MR CONVEYOR BELT CLEANER INSTALLATION DRAWING



PART NO. BELT WIDTH	DIMENSION			
	A	B	C	D
MR-0450 - 0750	45	275	85	32
MR-0900 - 1050	50	285	90	42
MR-1200 - 2400	70	295	110	52
Template supplied with each unit.		Widths in 150mm intervals.		



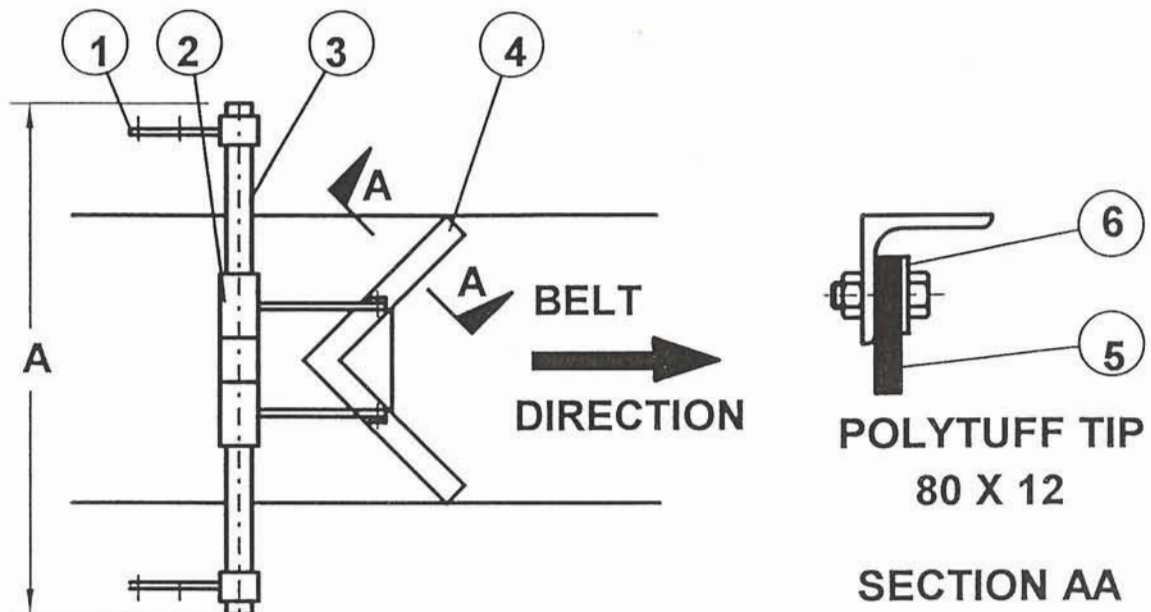
MECAL PTY. LTD.
9 Paramount Road (P.O. Box 140)
West Footscray 3012
Melbourne
AUSTRALIA

A.B.N. 63 103 035 687

Phone: 03-9314-0144
Fax: 03-9314 2576
International
Phone: +61-3-9314-0144
Fax: +61-3-9314-2576

MECAL PLOUGH CONVEYOR BELT CLEANER

SELECTION & SPARE PARTS



BELT WIDTH	ASSEMBLY PART NO.	1	2	3	4	5	6	DIM A	
		MOUNTING BRACKET	SHAFT LINKAGE	SUPPORT SHAFT	PLOUGH FRAME	POLYTUFF TIP	TIP CLAMP		
450	TPL51045	TPL50001	TPL50002	TPL51043	TPL51041	TPL51044	TPL51042	900	
600	TPL51060			TPL51063	TPL51061	TPL51064	TPL51062	1200	
750	TPL51075			TPL51078	TPL51076	TPL51079	TPL51077	1350	
900	TPL51090			TPL51093	TPL51091	TPL51094	TPL51092	1450	
1050	TPL51105			TPL51108	TPL51106	TPL51109	TPL51107	1650	
1200	TPL51120			TPL51123	TPL51121	TPL51124	TPL51122	1800	
1400	TPL51140	TPL50007	TPL50006	TPL51143	TPL51141	TPL51144	TPL51142	1950	
1500	TPL51150	TPL51001	TPL50010	TPL51153	TPL51151	TPL51154	TPL51152	2100	
1600	TPL51160			TPL51163	TPL51161	TPL51164	TPL51162	2200	
1800	TPL51180			TPL50011	TPL51183	TPL51181	TPL51184	TPL51182	2400
2000	TPL51200			TPL50012	TPL51203	TPL51201	TPL51204	TPL51202	2600

LOCAL REPRESENTATIVE:



A.B.N. 63 103 035 687

MECAL PTY. LTD.
 9 Paramount Road (P.O. Box 140)
 West Footscray 3012
 Melbourne
 AUSTRALIA

Phone: 03-9314-0144
 Fax: 03-9314 2576
 International
 Phone: +61-3-9314-0144
 Fax: +61-3-9314-2576

(TPL-04-001)

MECAL PLOUGH CONVEYOR BELT CLEANER

The Mecal Belt Plough compliments Mecal's Primary MH and Secondary MP and MR type belt cleaner range. Mecal offers a total solution to your belt cleaning requirements.

Design Features

Mecal Plough Belt Cleaners are designed for simplicity and modular construction. The whole cleaner is manufactured in Australia and Mecal keeps stock of all components. Spare parts are readily available, minimising down time.

Our plough design, cleans the inside of the return belt of the conveyor. Removing fine material build up and large lumps before they reach the conveyor tail pulley. This minimises wear and costly damage to pulley lagging, tail pulley drum and the belt.

Plough Belt Cleaners consist of a support frame, linkage and plough, of steel construction, with a durable powder coat finish. The cleaning blades, fitted to the plough, are a special high grade "polytuff" material which has a long cleaning life, reducing maintenance and running costs and will not damage or wear the belt. All fasteners are stainless steel.

The flexibility of this design makes it suitable for all conveyor frames and is very easily installed. The cleaner should be positioned above the return belt in a flat area, as close as practical to the conveyor tail pulley, ref installation diagram. The self adjusting feature compensates the wear of the cleaning blade, minimising maintenance.

The Mecal Belt Cleaning Plough is recommended for all good conveyor design, to minimise costly and premature wear due to stray material being trapped between the belt and conveyor tail pulley.

Maintenance

Our belt cleaners are almost maintenance free. The cleaning blades are the only wearing part which needs to be replaced periodically. The duration will vary depending on application.

Simply remove the bolts & clamp strip, insert new "polytuff" blade and bolt clamp strip on again. No adjustment required.



A.B.N. 63 103 035 687

MECAL PTY. LTD.
9 Paramount Road (P.O. Box 140)
West Footscray 3012
Melbourne
AUSTRALIA

Phone: 03-9314-0144
Fax: 03-9314 2576
International
Phone: +61-3-9314-0144
Fax: +61-3-9314-2576

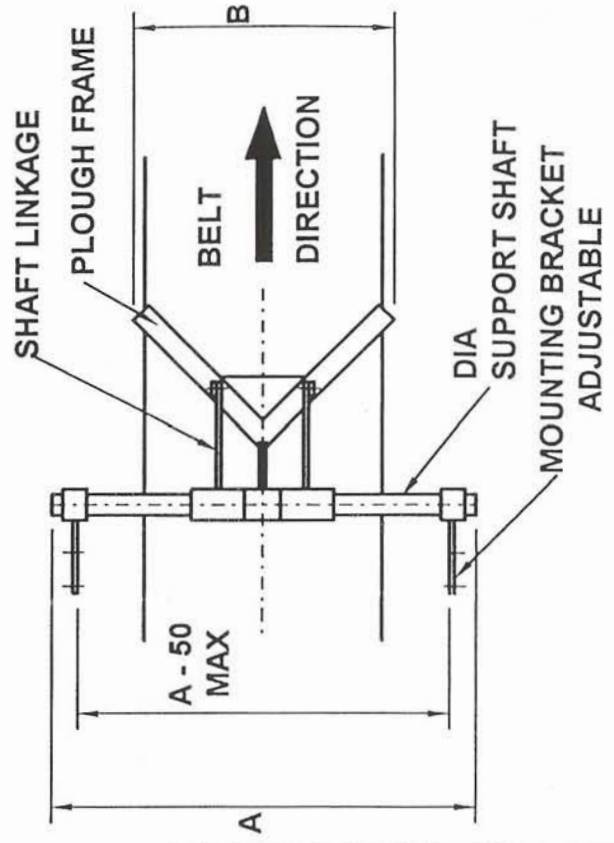
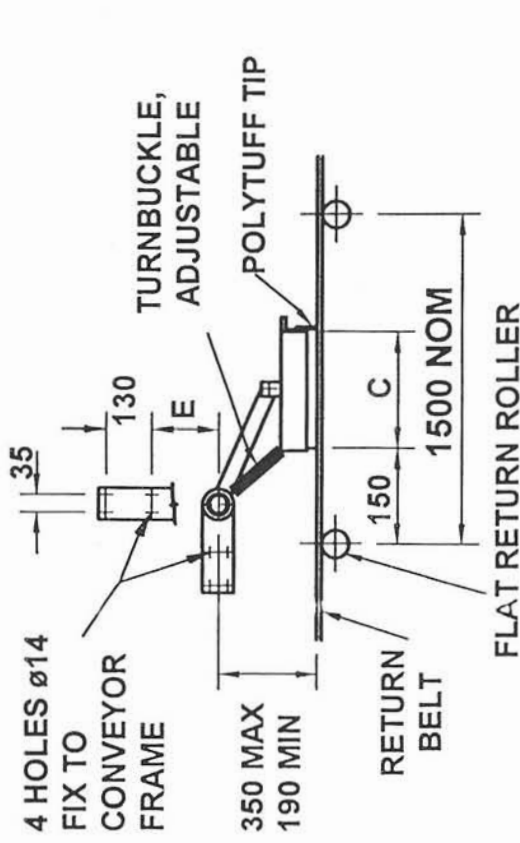
(TPL-04-002)

MECAL PLOUGH CONVEYOR BELT CLEANER INSTALLATION DRAWING

Installation

Follow this simple procedure to correctly install your MPL Belt Cleaning Plough:
(Refer to diagram)

- Fully assemble the plough as shown on the diagram.
- Switch off and isolate conveyor.
- Select a suitable flat return roller as close as practical to the tail pulley for the Plough cleaners installation and check that there is enough space available.
- Position the Belt Cleaner so that the plough apex is 150mm behind the return roller and on the belt centreline. The support pole should be between 190mm - 350mm above the return belt. The linkage arm is generally between 10 Deg. and 45 Deg. to the belt.
- Position the mounting bracket horizontal or vertical and drill four (4) holes diameter 14 into the conveyor frame. Fix brackets with M12 bolts.
- Centralize support pole with conveyor and fix locking screws.
- Adjust the chain between plough and pole so that the cleaning blades sit evenly on the belt.
- Run the belt and ensure that the Mecal MPL Belt Cleaning Plough cleans the belt effectively and runs smoothly. A final adjustment may be required.
- The Mecal Belt Cleaning Plough is now ready for trouble free service, ensuring a clean belt.



BELT WIDTH	ASSEMBLY PART NO.	DIMENSIONS				
		A	B	C	DIA	E
450	TPL51045	900	500	250		
600	TPL51060	1200	680	340		
750	TPL51075	1350	800	400	48	85
900	TPL51090	1450	950	475		
1050	TPL51105	1650	1100	550		
1200	TPL51120	1800	1250	625		
1400	TPL51140	1950	1450	725	60	98
1500	TPL51150	2100	1550	775		
1600	TPL51160	2200	1650	825		
1800	TPL51180	2400	1850	925	76	85
2000	TPL51200	2600	2050	1025		

OTHER SIZES AVAILABLE ON REQUEST



MECAL PTY. LTD.
 9 Paramount Road (P.O. Box 4140)
 West Footscray 3012
 Melbourne, AUSTRALIA

Phone: 03-9314-0144
 Fax: 03-9314-2576
 Int'l Phone: +61-3-9314-0144
 Fax: +61-3-9314-2576

A.B.N. 63 103 035 687

Website: www.mecal.com.au

Email: mecal@mecal.com.au

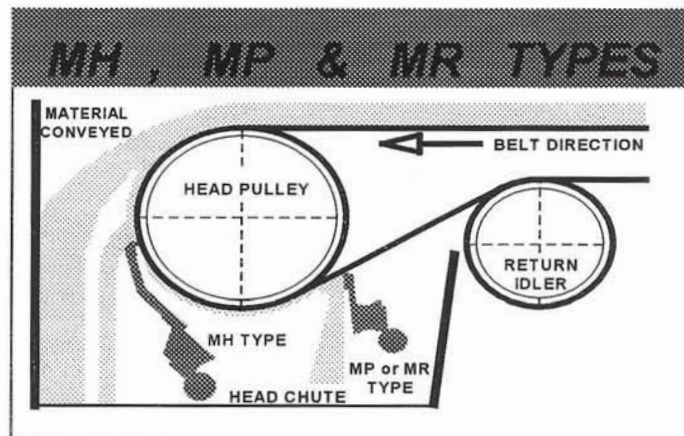
BELT CLEANER - QUESTIONNAIRE.

PRICE & AVAILABILITY REQUEST.

Date:

Company: Contact:

Phone: Fax:



mH Type.

Tips available Tungsten Carbide (T) or Polyurethane (P).

	Belt Width mm	Head Pulley Diameter	Quantity Required	Tip Please Circle	
Unit 1				T	P
Unit 2				T	P
Unit 3				T	P
Unit 4				T	P
Unit 5				T	P

MECAL REPLY			
FOB \$ A	FIS \$ A	CIF-SEA \$ A	CIF-AIR \$ A

Please note: Cleaning width is in units of 200mm.

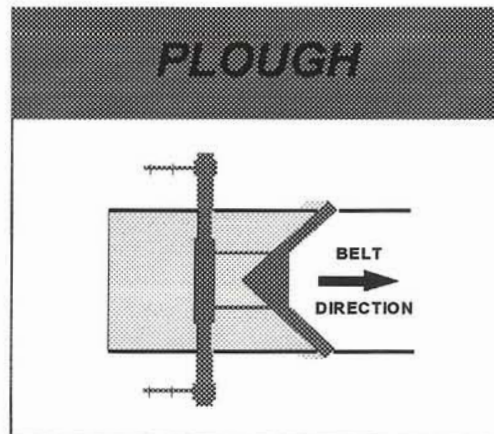
mP or mR Type (for Reversible Belt).

*Tips available Tungsten Carbide (T) or Polyurethane (P) for mP Type.
“ “ “ “ (T) only for mR Type.*

	Belt Width mm	mP Type Quantity Required	mR Type Quantity Required	Tip Please Circle	
Unit 1				T	P
Unit 2				T	P
Unit 3				T	P
Unit 4				T	P
Unit 5				T	P

MECAL REPLY			
FOB \$ A	FIS \$ A	CIF-SEA \$ A	CIF-AIR \$ A

Please note: Cleaning width is in units of 150mm.



Plough.

	Belt Width mm	Quantity Required
Unit 1		
Unit 2		
Unit 3		
Unit 4		
Unit 5		

MECAL REPLY			
FOB \$ A	FIS \$ A	CIF-SEA \$ A	CIF-AIR \$ A

Please also check our website: www.mecal.com.au



MECAL PTY. LTD.
9 Paramount Road (P.O. Box 4140)
West Footscray 3012
Melbourne, AUSTRALIA

Phone: 03-9314-0144
Fax: 03-9314-2576
Int'l Phone: +61-3-9314-0144
Fax: +61-3-9314-2576

A.B.N. 63 103 035 687

Website: www.mecal.com.au

Email: mecal@mecal.com.au

MECAL BELT CLEANERS

<u>AUSTRALIA</u>	<u>LOCATION</u>	<u>STATE</u>	<u>INDUSTRY</u>	<u>PRODUCT</u>
Alcoa of Australia	Anglesea Pinjarra Wagerup	VIC WA	Aluminium	Coal Bauxite Bauxite
Apcel Pty Ltd	Millicent	SA	Paper	Pulp
BHP Iron Ore	Funicane Island Goldsworthy Mt. Newman Pt. Hedland	WA	Mine	Iron Ore
BHP Steel	Newcastle Port Kembla	NSW	Steel	Coke&Sinter
Crinum Mine	Emerald	QLD	Mine	
CSR - Readymix	Oaklands Junction	VIC	Concrete	Aggregate
Galli Quarries	Kilmore	VIC	Quarry	
Geelong Cement	Geelong	VIC	Cement	
Generation Victoria	Morwell	VIC	Mine	Coal
Gold Mines of Australia	Meekatharra	WA	Mine	Gold
Hammersley Iron Pty Ltd	Dampier Paraburdoo	WA	Mine	Iron Ore Iron Ore
Henty Gold Project (RGC)	Queenstown	TAS	Mine	Gold
Johns Perry	Hall	ACT	Quarry	Aggregate
Melbourne City Council		VIC	Recycling	
Mt. Edon Mine	Tarmoola	WA	Mine	Gold
Pacific Power	Bayswater Wallerawang	NSW	Power Station	Coal Coal

<u>AUSTRALIA</u>	<u>LOCATION</u>	<u>STATE</u>	<u>INDUSTRY</u>	<u>PRODUCT</u>
Pivot	Newcastle Scottsdale	NSW TAS	Fertilizer Fertilizer	
Portland Aluminium Ltd	Portland	VIC	Aluminium	Alumina
Queensland Electricity Commission	Stanwell	QLD	Power Station	Coal
Queensland Alumina Ltd	Gladstone	QLD	Aluminium	Bauxite
Riverstones	Braeside	VIC	Tiles	Sand
Skilled Materials	Oakleigh	VIC		
Springvale Coal	Lidsdale	NSW	Mine	Coal
		<u>LOCATION</u>	<u>INDUSTRY</u>	<u>PRODUCT</u>
<u>BRUNEI</u>				
Butra Heidelberger Zement			Cement	
<u>FIJI</u>				
Fiji Industries Ltd			Sugar	Sugar
<u>INDIA</u>				
Pipawah Coal Project			Mine	Coal
<u>INDONESIA</u>				
Pt Bukaka Teknik Utama Pt Gunung Madu Plantations		Banjarmasin	Power Station Sugar	Coal Sugar
<u>NEW ZEALAND</u>				
Coal Corporation			Mine	Coal
New Zealand Sugar		Chelsea	Sugar	Sugar
Tasman Pulp & Paper			Timber	

	<u>LOCATION</u>	<u>INDUSTRY</u>	<u>PRODUCT</u>
<u>PHILIPPINES</u>			
Asia Brewery	Laguna		
Monomer Sugar Central	Pasig	Sugar	
Passi Sugar		Sugar	
Victoria's Milling		Sugar	
<u>SINGAPORE</u>			
Jurong Cement		Cement	